

Vitrification

FDA 510 (k) Cleared

global[®] DMSO Blastocyst Vitrification

Easy-To-Use and a High Performance System

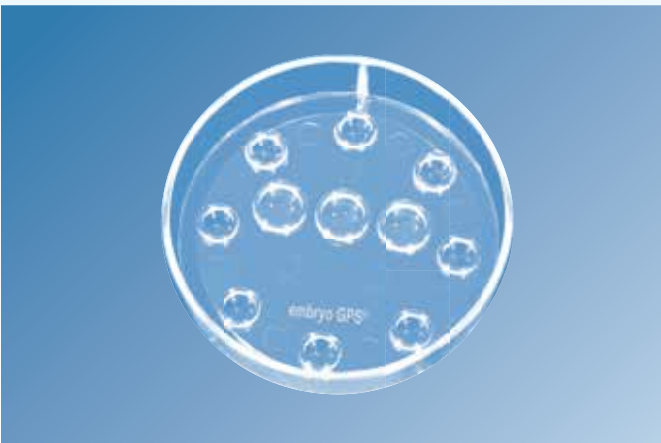
global[®] DMSO Blastocyst Vitrification Kit



global[®] DMSO Blastocyst Warming Kit



embryo GPS[®] Dish

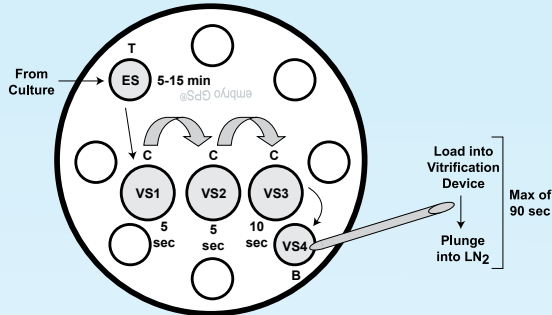


- **global[®] Based Medium**
- **For best results use with the global[®] Family**
- **Less Stress to the embryo using global[®] Family**

global® DMSO Blastocyst Vitrification Kit

- Traditional Vitrification
- Ready-to-use solutions
- Can be used with freezing device of your choice
- DMSO and Ethylene Glycol as cryoprotectants
- global w/ HEPES as a base medium
- Clinically tested
- Easy to learn
- Easy to teach to new staff

Overview of the use of the global® DMSO Blastocyst Vitrification Kit solutions for vitrification of human blastocysts.



Legend

ES = Equilibration Solution

VS1 = Vitrification Solution - Drop 1

VS2 = Vitrification Solution - Drop 2

VS3 = Vitrification Solution - Drop 3

VS4 = Vitrification Solution - Drop 4

T = Place in top of drop

C = Place in center of drop

B = Place in bottom of drop

Times indicate the time of exposure in each drop.

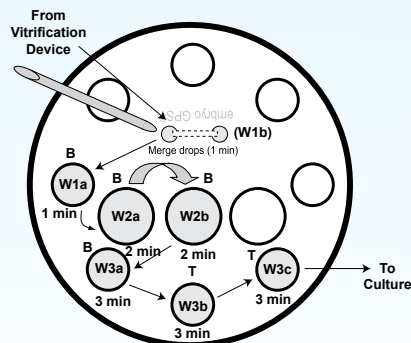
Each global® DMSO Blastocyst Vitrification Kit contains:

- 1 X 5 ml vial of Equilibration Solution containing DMSO (blue cap), Ethylene Glycol and 10 mg/ml HSA in global® w/ HEPES
- 1 X 5 ml vial of Vitrification Solution containing DMSO (white cap), Ethylene Glycol, Sucrose, and 10 mg/ml HSA in global® w/ HEPES
- 10 X embryo GPS® dishes, sterile, endotoxin and MEA tested

global® DMSO Blastocyst Vitrification Warming Kit

- Clinically tested
- global w/ HEPES as a base medium
- Easy to learn
- Easy to teach to new staff

Overview of the use of the global® DMSO Blastocyst Vitrification Warming Kit solutions for the rehydration of human blastocysts that have been vitrified using the global® DMSO Blastocyst Vitrification Kit.



Legend

W1a = Warm 1 - Drop a

W1b = Warm 1 - Drop b

W2a = Warm 2 - Drop a

W2b = Warm 2 - Drop b

W3a = Warm 3 - Drop a

W3b = Warm 3 - Drop b

W3c = Warm 3 - Drop c

B = Bottom of drop

T = Top of drop

Times indicate the time of exposure in each drop.

Each global® DMSO Blastocyst Vitrification Warming Kit contains:

- 1 X 5 ml vial of Warm 1 Solution (green cap), Sucrose and 10 mg/ml HSA in global® w/ HEPES
- 1 X 5 ml vial of Warm 2 Solution (yellow cap), Sucrose and 10 mg/ml HSA in global® w/ HEPES
- 2 X 5 ml vials of Warm 3 Solution (red cap), Sucrose and 10 mg/ml HSA in global® w/ HEPES
- 10 X embryo GPS® dishes, sterile, endotoxin and MEA tested